



SA Group Enterprises provides valued employment opportunities for people with a disability through its specialist employment services.

Open Employment Service

SA Group Enterprises' Open Employment Service is designed to assist people with a disability to seek, prepare for and gain employment in the community.

Your Employment Success

Your Employment Success (Y.E.S) provides job search services that target employment opportunities offering job seekers the best career and employment choices. Y.E.S also offers specialised services for people who are Deaf or have a hearing impairment. The service is based in SA Group Enterprises' Bedford Park offices.

Business Services

SA Group Enterprises has 20 years' experience managing real commercial businesses. We offer a wide range of employment opportunities to people who may require long-term support or where open employment may not offer the best option. Business Services are a great employment alternative providing people with the opportunity to work in a professional business while at the same time receive training and support tailored to their individual needs.

SA Wire Ware

SA Wire Ware is a manufacturing business situated at Melrose Park. It offers employment careers in manufacturing, such as:

- Drilling, Cutting and Machining
- Spot and MIG Welding
- General Fabrication and Process Work

SA Wire Ware produces wire and steel products including a range of display stands and storage systems and also offers other fabrication and construction services.

Work experience, or work trial placements can be arranged and will be tailored to suit the individual's requirements and abilities. Pre employment work experience provides opportunities for interested individuals to gain experience in manufacturing.



The business utilises modern manufacturing techniques including robotic wire bending machines and computerised planning systems and has modern tool room facilities for specialised workplace modification and tooling.

Inprint Design

Inprint Design is a graphic design studio operating from Bedford Park and offers employment careers in the graphic design industry, including:

- Graphic design and page layout for press
- Advertising and press promotions
- Web design and content management systems

It is also the publisher of Link Magazine, a leading national disability issues magazine.

A 13 week pre employment training program is offered as part of the initial assessment and preparation for employment at Inprint Design. This provides an excellent opportunity for suitable participants to access industry specific training, learn relevant skills and build up knowledge of the graphic design and IT industry. Training is provided by qualified, experienced staff in a professional and supportive environment.

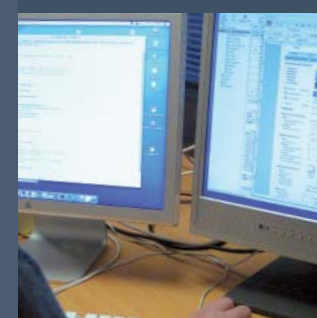
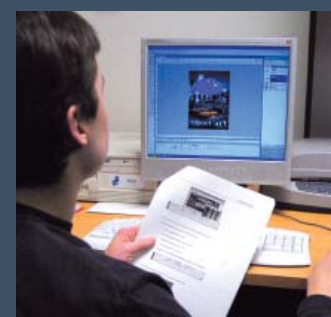
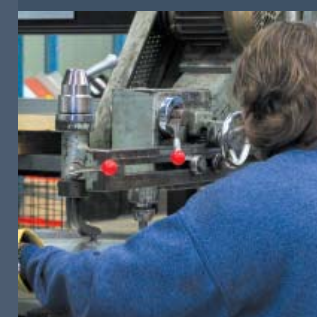
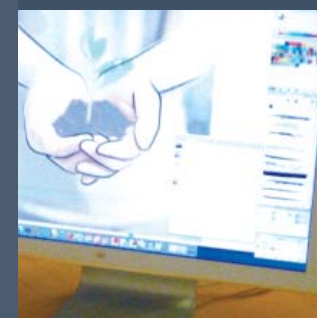
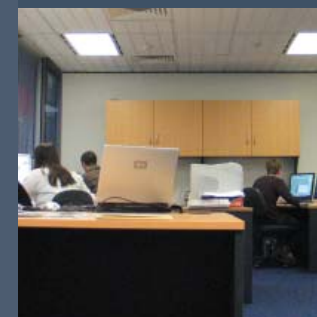
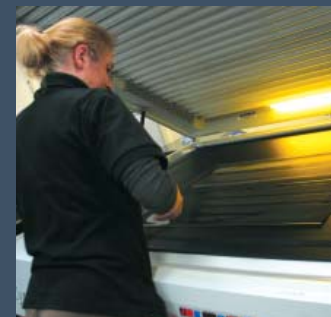
The business is located in large modern offices with the latest IT systems, computers and industry software. With over 16 years' experience in the design and press industry it is one of the leading graphic design studios in the southern suburbs of Adelaide.

How to Apply

To apply for a position you will need to meet the following selection criteria:

1. Eligible for a FaCSIA or DEWR funded service
2. Not be registered with any other disability employment service
3. Able to work at least eight hours per week
4. Meet the specific selection criteria for one of our business units or open employment service.

If you meet all the selection criteria and are interested in applying for a position you will need to contact the Human Services Manager.



Professional work places,
real jobs, valued people



SA Group Enterprises has been providing employment opportunities for people with disabilities for 20 years. Beginning with only a handful of people in the mid 1980s we now provide employment and services for over 100 people across three professional enterprises in South Australia.



SA Group Enterprises Incorporated

Mark Oliphant Building
Box Number 13
Laffer Drive
Bedford Park SA 5042

Phone: 08 8464 0780
Facsimile: 08 8201 7586

Email: employment@sage.org.au
Website: www.sage.org.au



Business Services

Integrated work places where people with disabilities are supported to work with and alongside industry-trained personnel in Manufacturing, Graphic Design, IT and Publishing.

Open Employment Services

Job search and support services that target the best career and employment choices in the community, specialising in services for people who are Deaf or have a hearing impairment.

Being a valued employee is important to everyone